

Swimlane Timeline

Flexible Visual Reporting

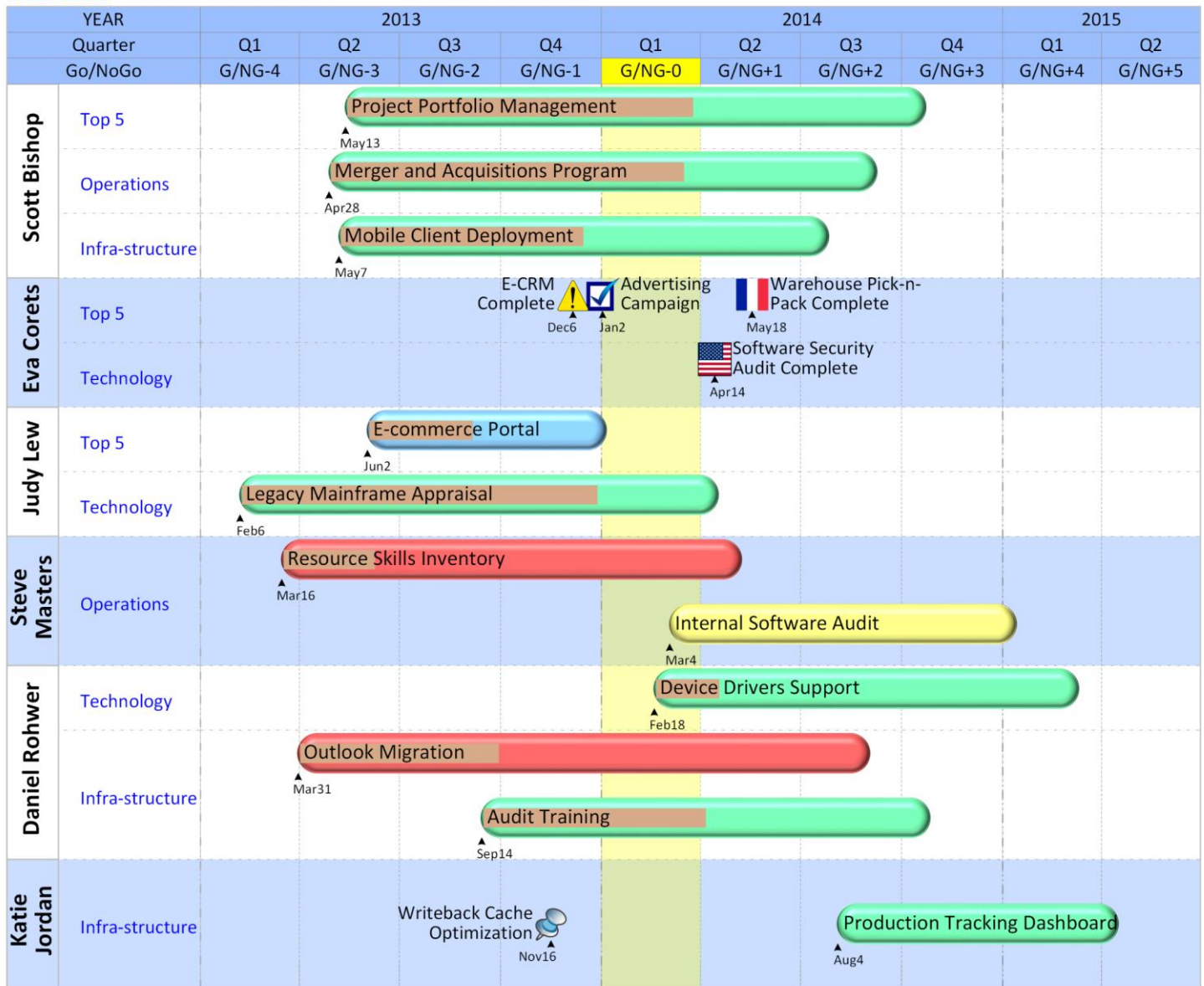
Swimlane Timeline™

What's New in v10



Demo 8 - Portfolio Status

Grouped-by: xOwnerThenType View: Demo 8 - Project Status





Swimlane Timeline™

What's New in v10

Contents

- The v10 release supports **Visio 2013, 2016, and 2019**..... 3
- Added custom Grouping Level-1 positioned **Above, or Left of**, Level-2 3
- Added **ST Manage/Milestones** option to create and change Custom Milestone Shapes. 4
- Added the ability to specify **Custom Milestone Type** 5
- Added the ability to specify **Custom Milestone Height** 5
- Enhanced Custom **Overrides** option to save Milestone Type & Height 6
- Added the ability to specify a **Swimlane Height**..... 6
- Added Timeline Rows support for **Countdown Rows** 7
- Added special effects including: **Bevel, Glow, and Rounded Corners**. 7
- Enhanced **Conditional Format** with support for Importing an existing Conditional Format 8
- Added option to **Migrate Legends** to the faster v10 xLegend format..... 8
- Enhanced **xLegends/Define New** to support import an existing Legend..... 9
- Added ability to apply an **xLegend** independent of the Conditional Format applied 9
- Added **Enterprise Project: Enforce Checked-In** option for Project Server and Project Online users 9
- Added ability to **Map Start/Finish** as well as **Baseline Start/Finish**..... 10
- Enhanced Custom Text with checkbox to **Hide Empty Fields** 10
- Added ability to **Show Timeline Rows at both Top and Bottom** 11
- Enhanced **Timeline Rows** to support more than 3 Timeline Rows 11
- Enhanced **Custom Format** and **Filter** to support "Does Not Contain" Test..... 11
- Added **Export to PDF** to Swimlane Timeline ribbon 12
- Added Online Links to Swimlane Timeline User Documentation 12
- Enhanced **Send to PowerPoint** to default to Widescreen Format..... 12
- Enhanced **Custom Font** to support custom Date Marker Font Formats 12
- Enhanced support for **International Windows Region** Settings 12
- Fixed individual **Swimlane right-click Layout** selections..... 12
- Fixed **Copy Selected to User** so the item is immediately available in the option pick list 12
- Fixed **Conditional Format** when same fieldname referenced with differing lower and upper case characters 12

Swimlane Timeline™

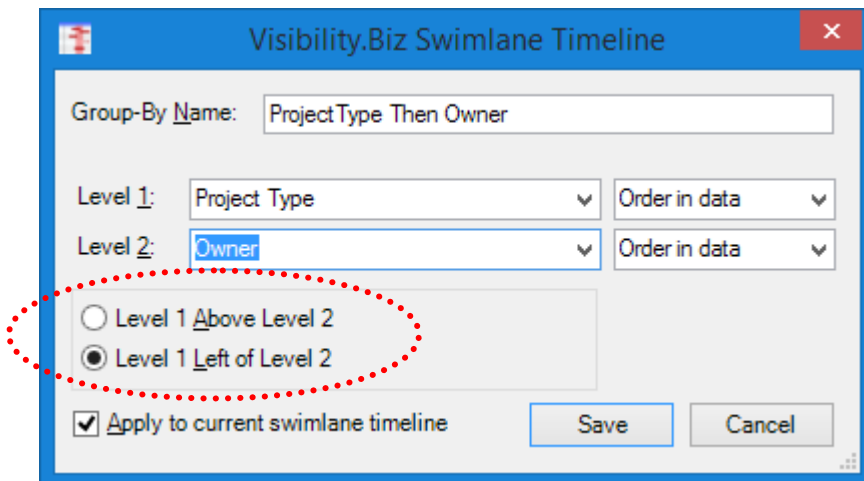
What's New in v10

- The v10 release supports **Visio 2013, 2016, and 2019**.

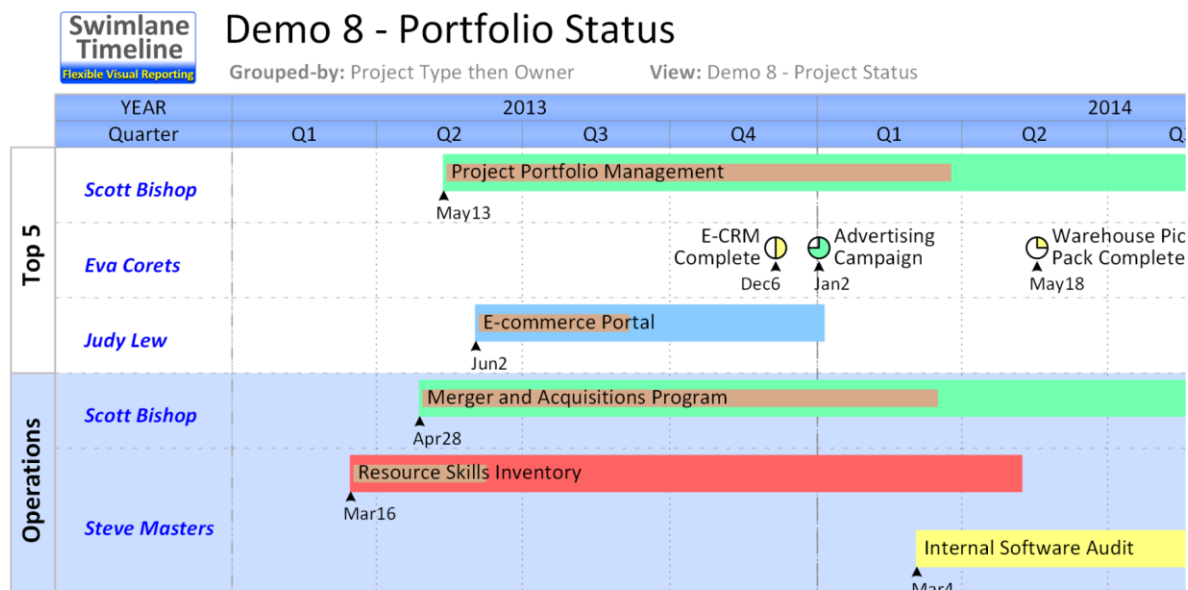
Visio 2010 users can either upgrade their Visio version, or continue to use the v9 release.

- Added custom Grouping Level-1 positioned **Above, or Left of, Level-2**

The **Group/Define New** option include two new option for positioning the Level 1 Grouping Above/Left of the Level 2 Grouping as shown below:



Notice that the results with Level 1 groupings now shown to the left of level 2 groupings as shown below:



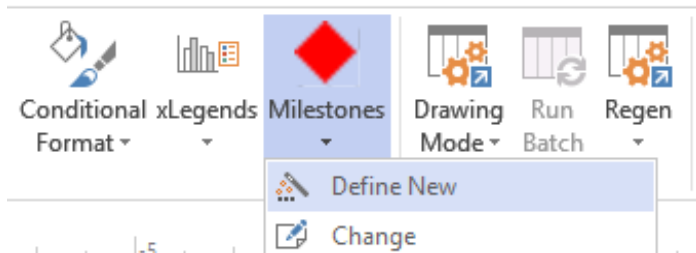
Swimlane Timeline

Flexible Visual Reporting

Swimlane Timeline™

What's New in v10

- Added **ST Manage/Milestones** option to create and change Custom Milestone Shapes.



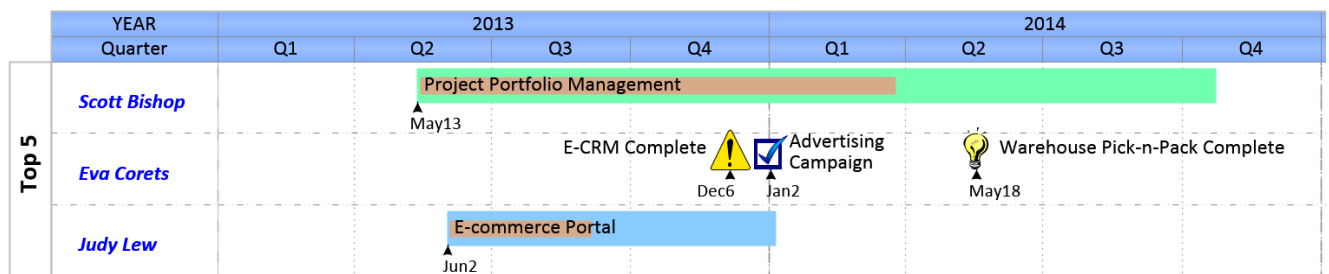
The **Milestones/Define New** option allows you to easily create new custom milestone shapes that are always available after you have created them. You can create a new milestone from scratch, or **Import an existing milestone** and start from there. The custom milestones can be built using all Visio options including **Visio/Insert/Pictures**.

Swimlane Timeline

Custom Milestone

- Build your custom milestone on this page. You can drag & drop Visio shapes, create custom shapes, and import bitmap images to build your milestone. Try to fit your custom milestone shape into the square created by the four blue dotted guidelines. Zoom in for detail work.
- You can right-click on the page to **“Import Milestone”** and **“Show Document Stencil”** that includes pre-defined milestone shapes that you can drag and drop onto the page.
- When done, right-click on the drawing page, and select **“Save Milestone”**

You can share your custom milestones with others by copying them into a **Shared Folder** that others can access. A number of example custom milestone shapes are included when you set the **Shared Folder** to be the Swimlane Timeline v10 Installation **Demos** folder. Right-click on any milestone, or shift-select multiple milestones, and select **Change Milestone Type**.



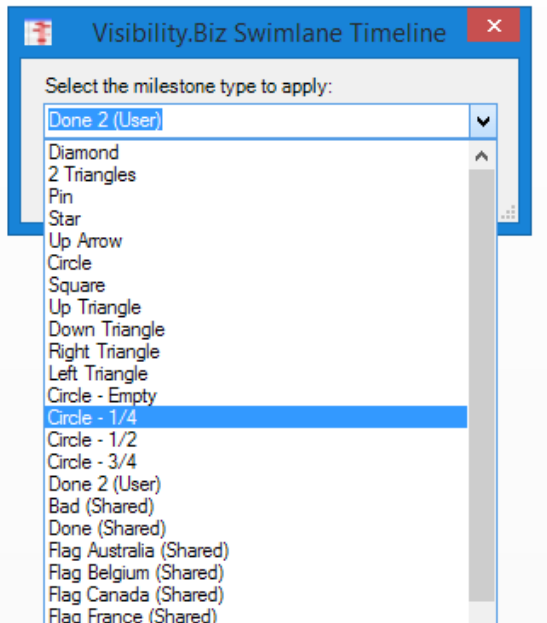
The manually specified milestone types can be saved and re-applied using the custom **Overrides** option.

Swimlane Timeline™

What's New in v10

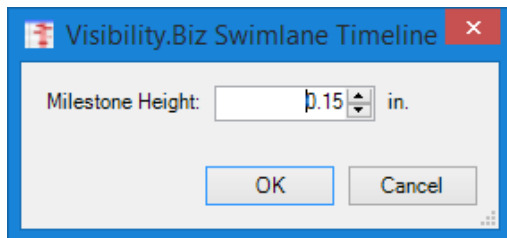
- *Added the ability to specify **Custom Milestone Type***

Right-click on any milestone, or shift-select multiple milestones, and select **Change Milestone Type** to change the current milestone shape. You can choose from any installed milestones, local custom user milestones, and custom milestones in the Shared Folder.

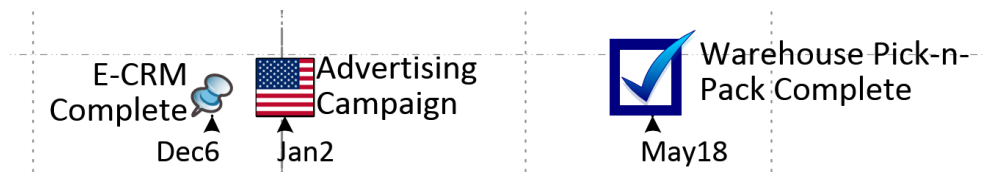


- *Added the ability to specify **Custom Milestone Height***

This option allows you to emphasize different milestones in your project reports. Right-click on any milestone, or shift-select multiple milestones, and select **Change Milestone Height**.



Below is an example of milestones with different milestone heights specified in the same report.



The manually specified milestone heights can be saved and re-applied using the custom **Overrides** option.

Swimlane Timeline™ What's New in v10

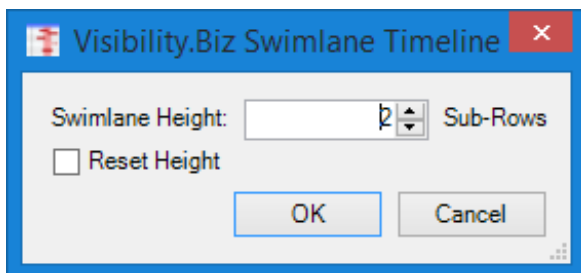
- *Enhanced Custom **Overrides** option to save Milestone Type & Height*

The “Swimlane Timeline/Overrides” option, formally named “Align”, allows users to save, and then re-apply later, the certain manual changes made to individual tasks in a report that override the defaults. The following currently applied settings are saved for **all visible tasks**:

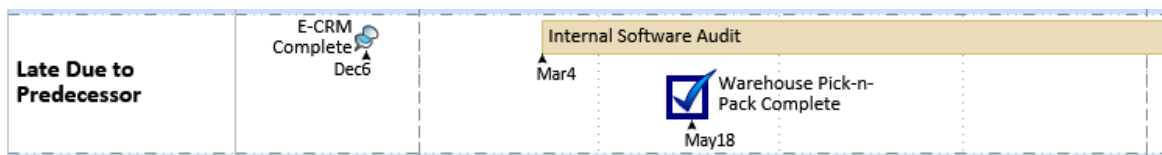
- Text Alignment
- Text Position
- Text Wrap
- Text Hidden
- Date Marker show/hide
- Overlap Task Settings
- **Milestone Type**
- **Milestone Height**

- *Added the ability to specify a **Swimlane Height***

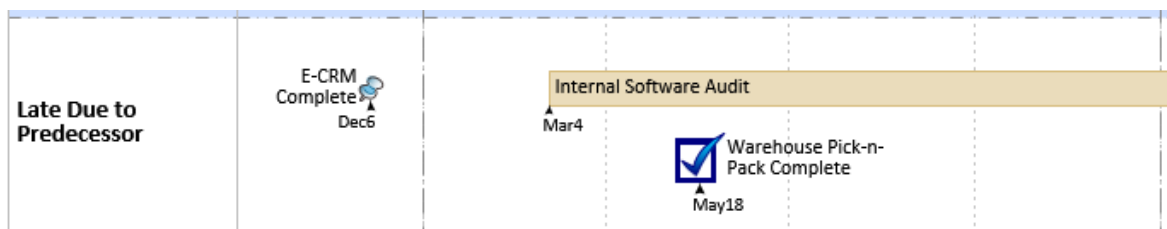
Right-click on a swimlane to change the height of the swimlane. Height increments are in number of sub-rows. The tasks and swimlanes are positioned proportionally from the center-out rather than from the top-down.



Before changing height from 2 Sub-Rows to 3 Sub-Rows



After change height to 3 Sub-Rows



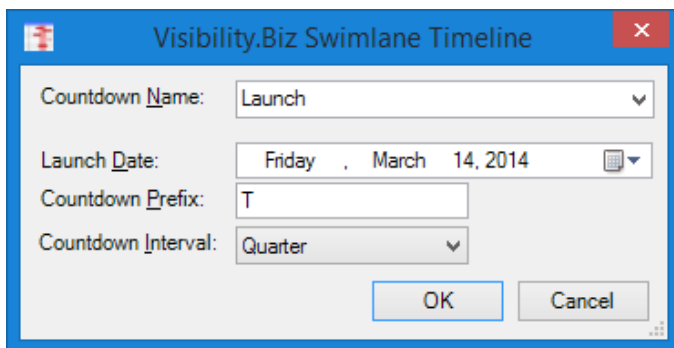
After changing height, you can **Reset Height** to return the swimlane to its original height and layout.

Swimlane Timeline™

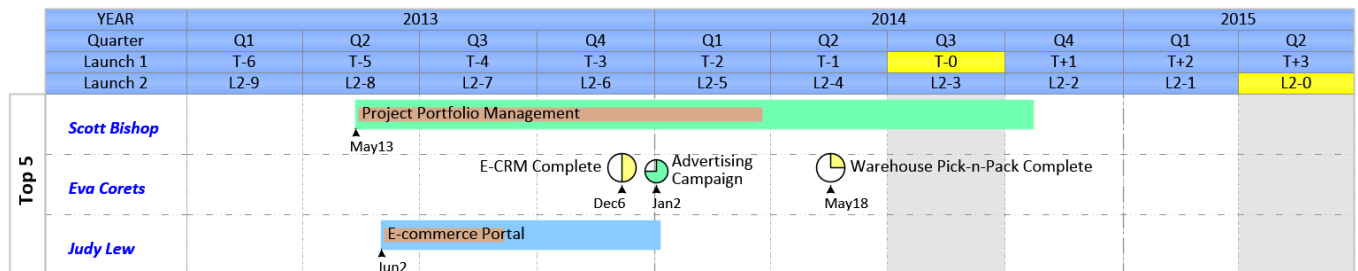
What's New in v10

- Added Timeline Rows support for **Countdown Rows**

There is a new **Countdown** option available in the custom Timeline Row “Available Intervals”. When you add the Countdown interval to the “Interval to Include” then you are solicited for the **Countdown Name** that shows in the upper left of the report, the **Launch Date**, the **Countdown Prefix** that can be any text, and the **Countdown Interval** (Hour, Day, Week, Month, Quarter, Year and Fiscal Year) as shown below:

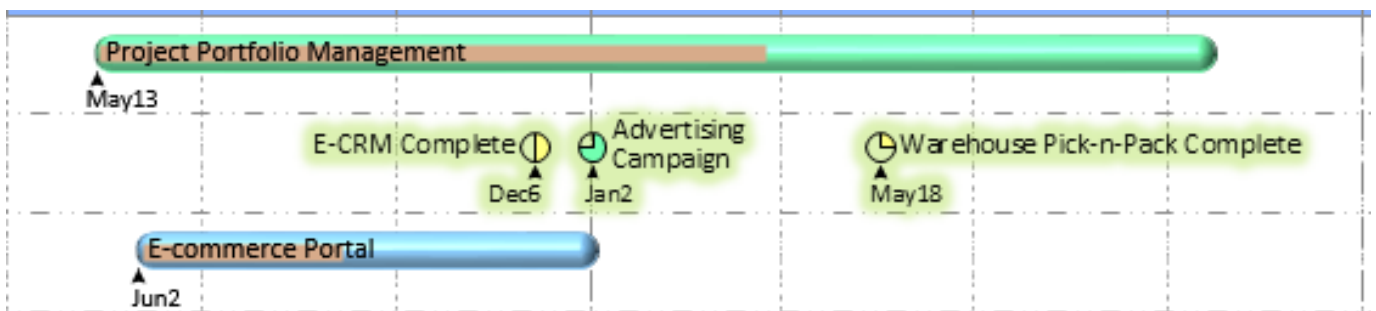


You can create multiple Countdown Rows in the Timeline by selecting adding another Countdown interval to the “Intervals to Include”. You can leverage a previous countdown by selecting the Countdown Name pick list.



- Added special effects including: **Bevel, Glow, and Rounded Corners**.

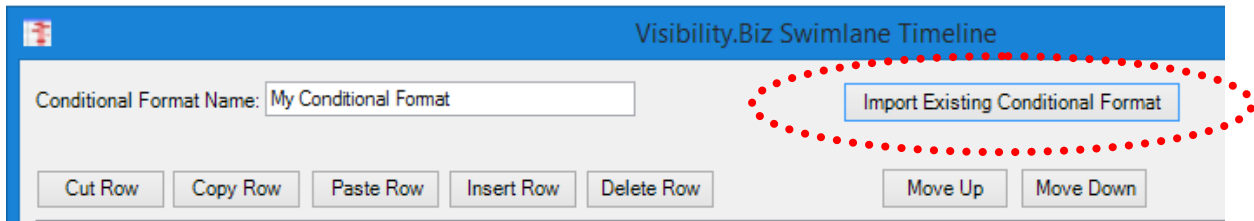
A subset of the Visio special effects are now available within the Swimlane Timeline custom **Color Palette** and custom **Conditional Format** options and can be applied with a custom **Style**. An example of the results of applying Line Rounded Corners, Interval Bar Beveling, and Milestone Glow effects is shown below:



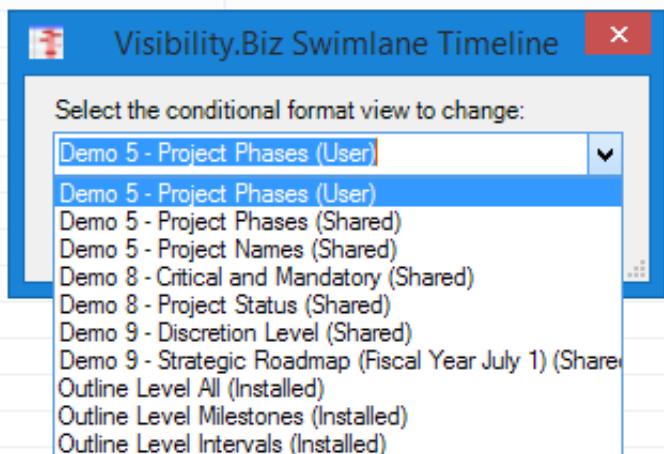
Swimlane Timeline™

What's New in v10

- **Enhanced Conditional Format** with support for **Importing an existing Conditional Format**



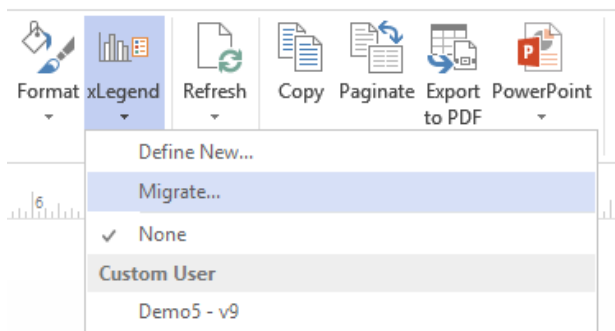
When you select **Import Existing Conditional Format** then you are presented with an option pick list that includes all Installed, Shared, and Local User conditional formats to choose from:



This option will help you save time building custom conditional formats by leveraging existing ones.

- **Added option to Migrate Legends to the faster v10 xLegend format**

We have also implemented a better method of handling legends that allows the Swimlane Timeline to quickly build the new “xLegend” option pick list. A new **xLegend/Migrate** option allows users to easily migrate their existing legends. Once migrated, they will show in the **xLegend** pick list.



The migration will create xLegends for all master shapes in your legacy legends. You should delete any migrated xLegends that you do not plan on using.

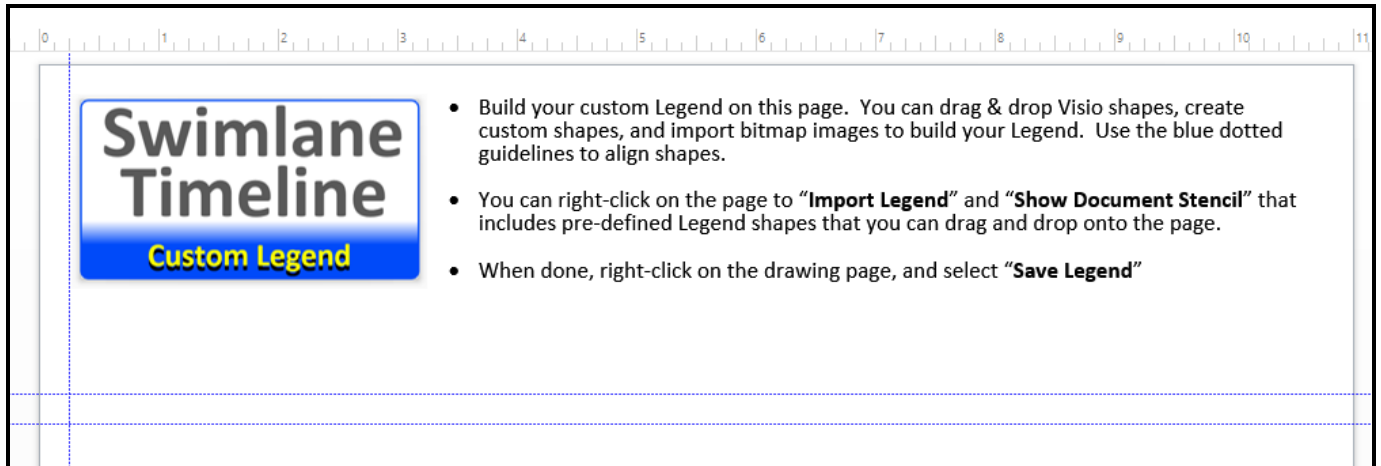
Swimlane Timeline

Flexible Visual Reporting

Swimlane Timeline™

What's New in v10

- *Enhanced xLegends/Define New to support import an existing Legend.*

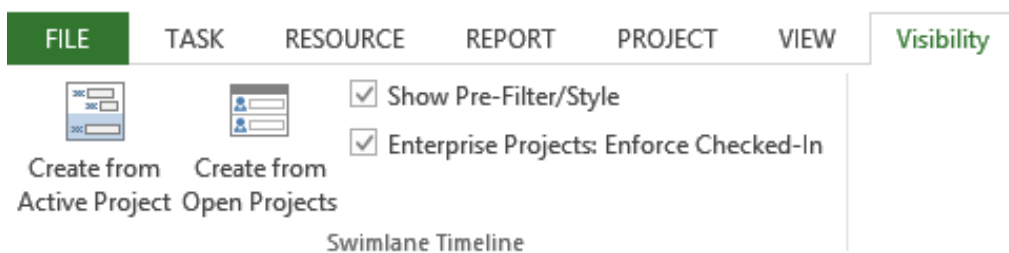


- *Added ability to apply an xLegend independent of the Conditional Format applied*

The v10 version unties the conditional Format from the Legend. The Format and Legend no longer have to be the same name. Users can now select one custom conditional Format, and separately pick a different v10 xLegend. The custom Style option is what saves the specific Format and xLegend combination applied.

No longer requiring the Format and Legend to have the same name can come in handy when you have applied an all-encompassing conditional Format but the current view only shows a few of the conditions applied. A v10 user can now have multiple versions of an xLegend, and subsets of it, that only show the conditions that are visible in the report.

- *Added **Enterprise Project: Enforce Checked-In** option for Project Server and Project Online users*



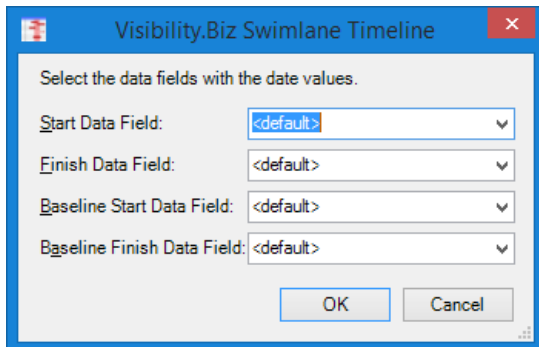
A bug in MS Project can cause Project Server and Project Online internal database synchronization issues when creating Swimlane Timeline reports with checked-out enterprise projects. Users can now avoid these issues with the **Enterprise Projects: Enforce Checked-In** option to ensure all Project Server and Project Online schedules are checked-in, and all internal databases remain in sync, when creating Swimlane Timeline reports.

Swimlane Timeline™

What's New in v10

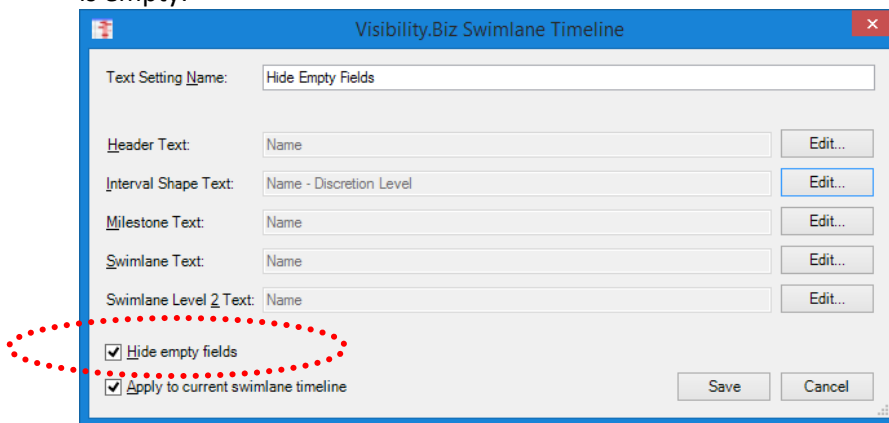
- *Added ability to **Map Start/Finish** as well as **Baseline Start/Finish***

The **ST Manage/Map Fields** option allows you to map different date fields into the Start/Finish and Baseline Start/Finish values to allow you to visualize the tasks in your reports also based on Start1-n/Finish1-n and Baseline1-n Start/Finish

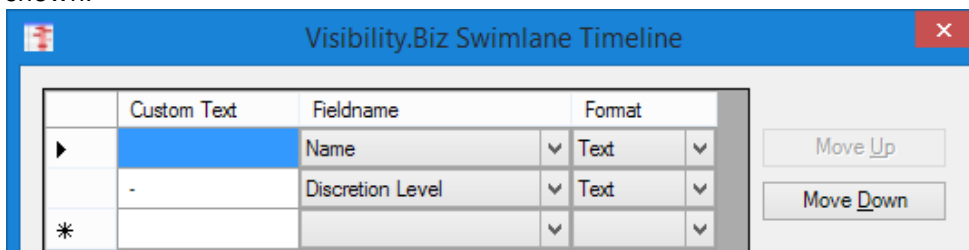


- *Enhanced Custom Text with checkbox to **Hide Empty Fields***

The **Hide Empty Fields** option will prevent showing a field value, or its associated Custom Text, if the field value is empty.



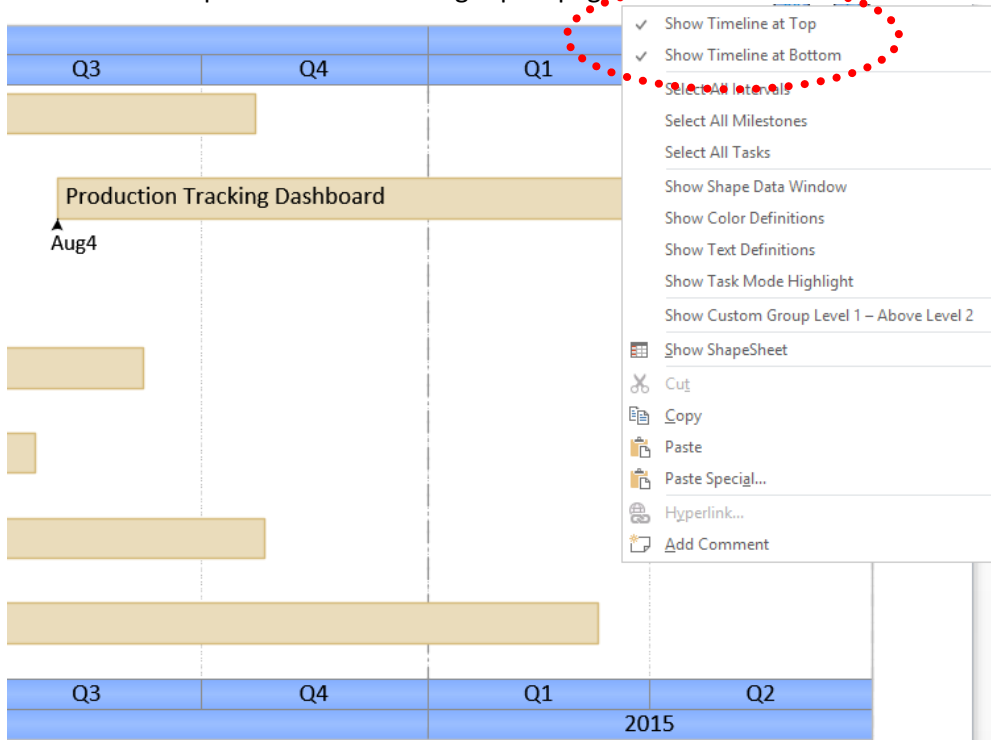
In the case below, if the **Hide empty fields** checkbox is checked in the main Custom Text dialogue, then the “Discretion Level” field value is empty, then the prefix custom text “ - ” and the Discretion Level value are not shown.



Swimlane Timeline™ What's New in v10

- **Added ability to Show Timeline Rows at both Top and Bottom**

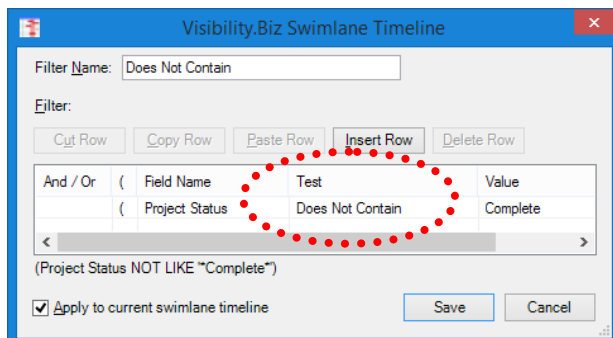
This new option can be useful when you have a report that is so long that the timeline rows at the top of the report are no longer visible when panning down through it. Right-click on the white page border to show the Show Timeline options for the drawing report page:



- **Enhanced Timeline Rows to support more than 3 Timeline Rows**

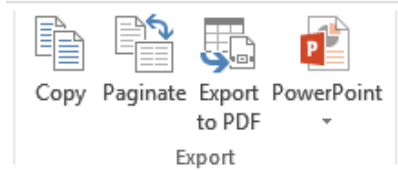
There is no longer a limit of 3 Timeline Rows in your Swimlane Timeline reports. You can now have as many timeline rows as you like in your reports.

- **Enhanced Custom Format and Filter to support "Does Not Contain" Test**

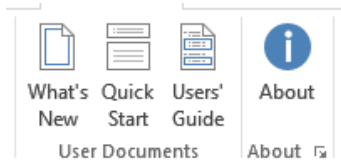


Swimlane Timeline™ What's New in v10

- Added **Export to PDF** to Swimlane Timeline ribbon



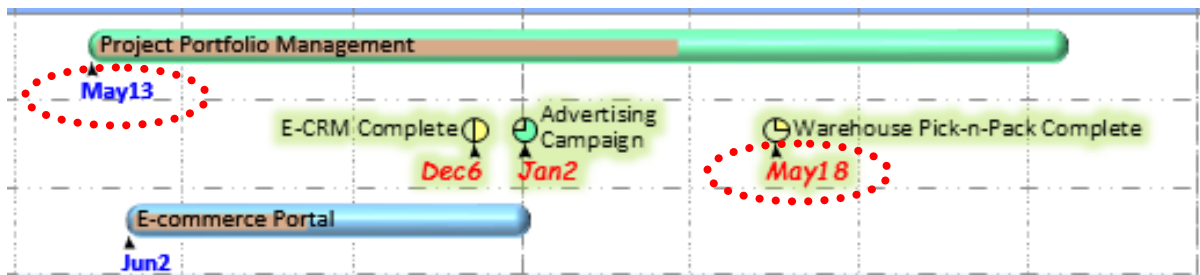
- Added **Online Links to Swimlane Timeline User Documentation**



These are living documents that are continually being updated and improved with additional content.

- Enhanced **Send to PowerPoint** to default to Widescreen Format
- Enhanced **Custom Font** to support custom Date Marker Font Formats

The custom Font setting now includes options to specify fonts for “Date Marker Interval Bar Font Setting” and “Date Marker Milestone Font Settings”. These options allow you to have different Date Marker fonts for milestones and interval bars as shown below:



- Enhanced support for **International Windows Region Settings**
- Fixed individual **Swimlane right-click Layout** selections
- Fixed **Copy Selected to User** so the item is immediately available in the option pick list
- Fixed **Conditional Format** when same fieldname referenced with differing lower and upper case characters